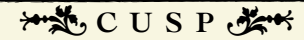


# CONSTRUCTION EQUIPMENT

# CLEANING STANDARDS



FOR MORE INFORMATION CONTACT

CUSP

BOX 726

LAKE GEORGE, COLORADO 80827

719.748.0033

[CUSP@UPPERSOUTHPLATTE.ORG](mailto:CUSP@UPPERSOUTHPLATTE.ORG)



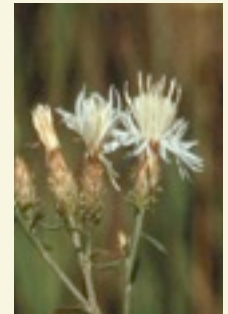
## CLEANING EQUIPMENT

A seemingly unavoidable consequence of restoration and construction activities is the disruption of established soils, slopes, and native plants and the unnecessary spread of invasives; however, cleaning your equipment can greatly reduce the chance of invasive spread. If your equipment does not meet the standards it will not be allowed to enter a project site until properly cleaned.



### WHAT TO EXPECT PRIOR TO WORKING WITH CUSP

Before any equipment will be allowed on site CUSP and / or CUSP partners will inspect all equipment intended to be used on a project. If equipment does not meet the standards as described within this guidance document equipment may need to be cleaned further before work will commence.



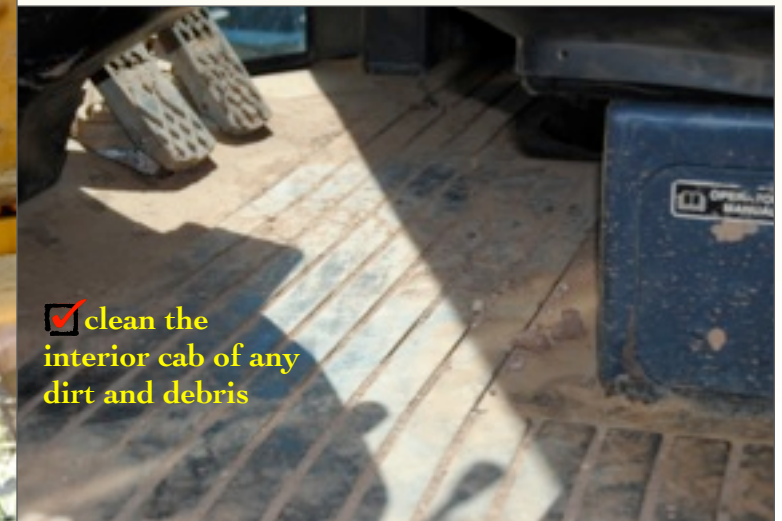
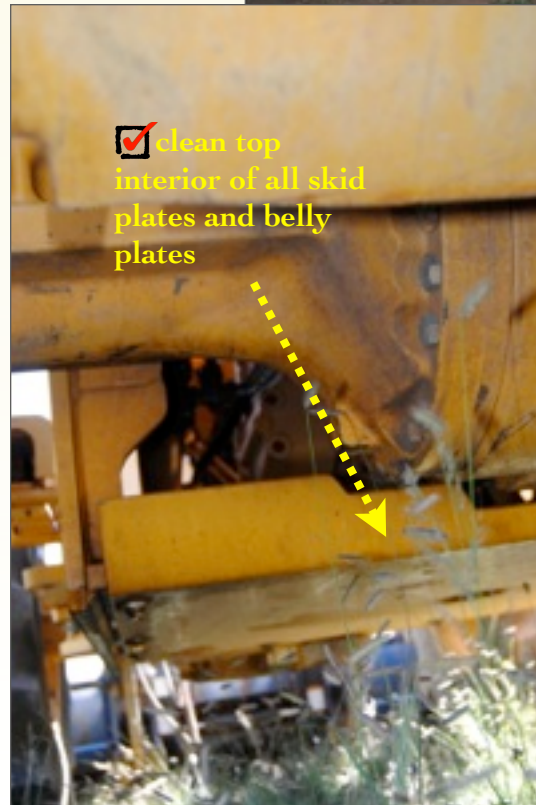
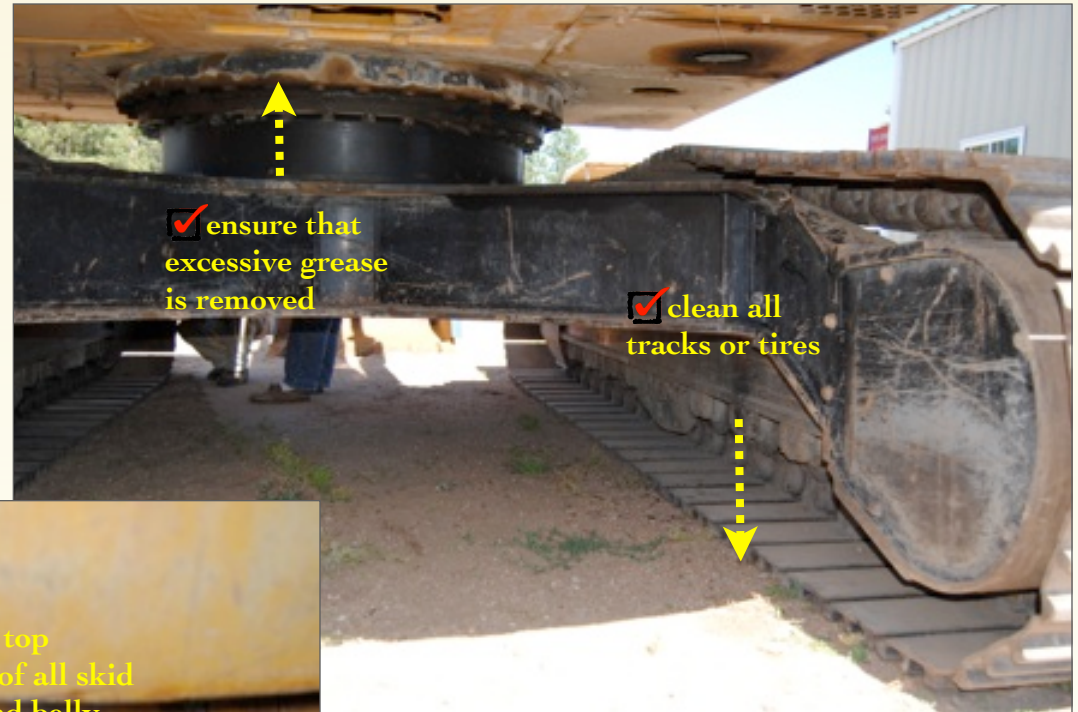
### PREVENTING INVASIVE SPECIES SPREAD

- Contractor shall ensure all equipment moved onto National Forest System land is free of soil, seeds, vegetative matter, or other debris that could contain or hold noxious weed seed. The Forest Service will request inspection of equipment prior to it being placed into service. Cleaning shall be repeated if moving from one area to another.
- Cleaning sites need to be approved by CUSP project manager, but must be established so as to minimize the introduction of invasive species.
- If equipment will be working in live water, additional cleaning is required to reduce the movement of waterborne invaders such as the New Zealand mud snail. Once cleaned of mud and debris, equipment shall either 1.) be sprayed/soaked with a 1:15 solution of Sparquat institutional cleaner and water. Keep equipment moist for ten minutes. OR 2.) be sprayed/soaked with water greater than 140° F for at least ten minutes. Also, when working in and around water, clothing, boots, tools and other items used in and around the water shall also be cleaned in hot water (>104 degrees) or soaked for 20 minutes in 100% vinegar.
- Machine operators must avoid driving through any excessively weedy areas and will notify CUSP program staff of such locations if they have not already been mapped and marked by CUSP staff.
- All seed mixes, plants, straw, and hay materials used in revegetation must meet Colorado Weed-Free specifications.

# Construction Equipment Cleaning Standards

## MAKE SURE TO CLEAN YOUR EQUIPMENT FOLLOWING THESE GUIDELINES

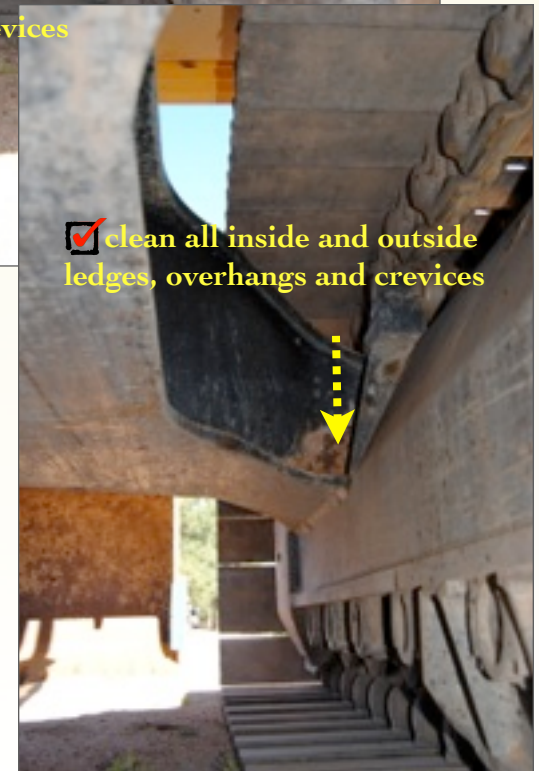
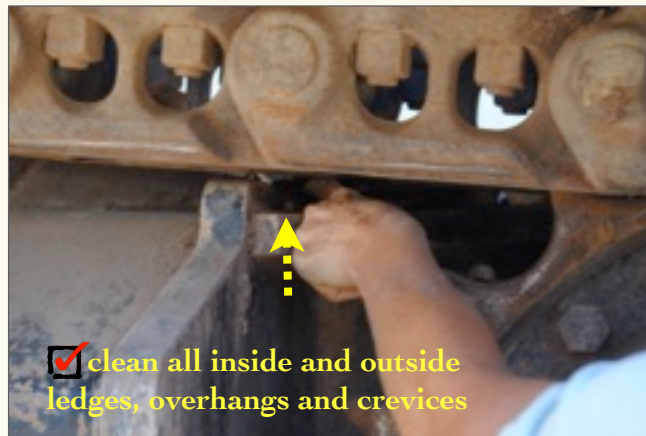
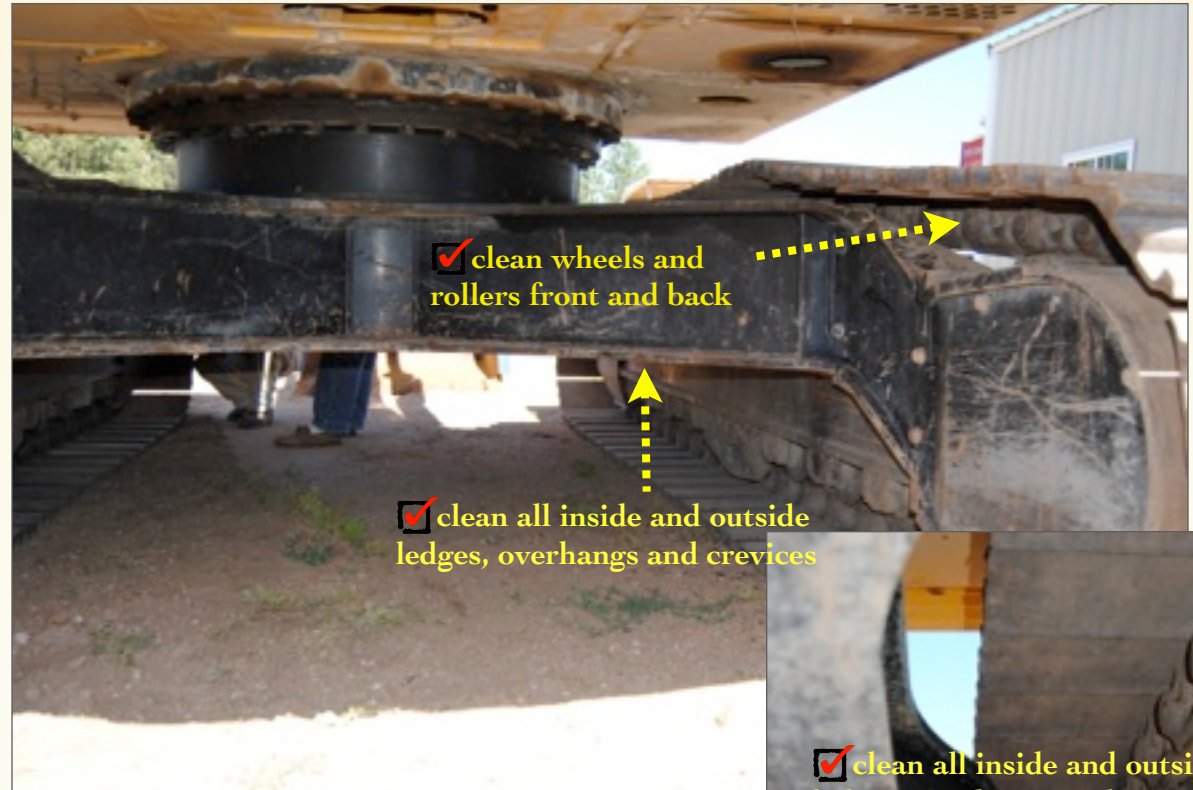
- ☑ It may be required to loosen caked on mud and debris with hand tools such as a wire brush and paint.
- ☑ Remove mud, dirt and plant debris before mobilizing equipment
- ☑ Clean equipment with high pressure washer.
- ☑ Clean all tracks or tires
- ☑ Clean top interior of all skid plates and belly plates
- ☑ Clean any pivot points where dirt or debris could be lodged
- ☑ Ensure that excessive grease is removed
- ☑ Clean the interior cab of any dirt and debris
- ☑ Clean all cutter wheels or teeth
- ☑ Trailers used for transporting equipment will also be inspected before entering work sites
- ☑ Call CUSP if you have any questions!



# Construction Equipment Cleaning Standards

MAKE SURE TO CLEAN YOUR EQUIPMENT  
FOLLOWING THESE GUIDELINES

- ☑ Clean wheels and rollers front and back
- ☑ Clean all inside and outside ledges, overhangs and crevices
- ☑ Clean bucket



# Minimizing Invasive and Noxious Weeds



 C U S P 

*The Coalition for the Upper South Platte was formed in 1998 by area stakeholders interested in 'a healthy watershed, now and in the future'.*

*CUSP's mission is to protect the water quality and ecological health of the Upper South Platte Watershed, through the cooperative efforts of watershed stakeholders, with emphasis placed on community values and economic sustainability.*

*Priority issues include: water resources and quality, forest health, fire rehabilitation, noxious weeds, stream/river restoration, erosion and flood control, community education, riparian corridor enhancement sustainable recreation, local economies, volunteer outreach, community preparedness, and carbon sinks and storage.*

*CUSP is a 501(c)(3) non-profit organization that depends on contributions to continue valuable program such as the Noxious Weed Cost Share Program and River Restoration Initiatives.*



## **MINIMIZING THE IMPACTS OF INVASIVE WEED SPECIES BY CLEANING YOUR EQUIPMENT PROPERLY**

### **Prior to any construction:**

- CUSP will:
  - work with you to identify and map noxious and invasive weed populations present in the project area. We will work with you to ensure that your crew understands how to work around the weeds that are present. We may treat prior to work beginning, or contain any weed populations that may be impacted or disturbed by construction activity.
- You must:
  - certify that all construction material sources used for supplies of sand, gravel, rock and mulch are weed-free prior to obtaining or transporting any material. Obtain and use only certified weed-free straw or use fiber roll logs for sediment containment. And wash and inspect all vehicles for weed seeds and plant parts prior to bringing them onto the job site.

### **During construction:**

- Minimize ground disturbance and vegetation removal as much as possible and practical.
- Avoid areas that have been identified as weed source areas on maps or through flagging.

- Restrict vehicles or other traffic that may transport weed seeds or plant material from entering the job site unless they are first washed and inspected.

### **After construction:**

- Revegetate or otherwise prevent the establishment of weeds in all areas of the job site through a program on monitoring and post-construction weed treatment for the life of the project.
- Utilize seed and other plant material that has been checked and certified as noxious weed-free and that has a weed content of 0.05% or less.
- Revegetate using plant materials that have a high likelihood of survival.
- Monitor all seeded sites for weed infestation. Treat all weeds adjacent to newly seeded areas prior to planting and treat planted areas for weeds in the first growing season.

